

Worklist: 2027

<u>LAB CASE</u>	<u>ITEM</u>	<u>TASK ID</u>	<u>DESCRIPTION</u>
M2017-3728	1	100288	AM 13 Blood LCMS-QQQ Benz
P2017-1918	1	100291	AM 13 Blood LCMS-QQQ Benz



Worklist Report

Worklist Path:	C:\MassHunter\ISP Methods\worklists\111417 BENZ and CANN SP and CS.wkl
Date Modified:	11/14/2017 03:52:06 PM
Date Printed:	11/16/2017 03:12:49 PM

Worklist Run Parameters

Operator Name:	62340
Run Type:	Standard Start
Part of Method to Run:	Acquisition Only
Execution for Acquisition-DA:	Synchronous
Acquisition Method Path:	C:\MassHunter\ISP Methods\Acquisition
DA Method Path:	D:\MassHunter\methods
Data File Path:	C:\MassHunter\Data\2017\Combined\111617 SP CS Benz and Cann Reinjects
Pre-Worklist Script:	---
Post-Worklist Script:	SCP_InstrumentStandby(){MH_Acq_Scripts.exe}
Acquisition Clean Up Script:	---
Overlapped Injection:	No
Clear sample selection after run:	Yes
Wait Time for Ready(Min):	10
Threshold Disk Value(GB):	10
Comment:	---

Plate Barcode Information

Plate	Barcode
P1	
P2	

Worklist Table

Sample Position	Sample Name	Method	Data File	Sample Type	Level Name	Comment	Info.
P1-A1	Blank	Benzos_Z_Drugs_ACN_FA_ISP_2017.m	BZ-BlankCS.d	Blank		AM 13 Benzo and Z by LCQQQ	Worklist 2024
P1-A1	Blank	Benzos_Z_Drugs_ACN_FA_ISP_2017.m	BZ-Blank1CS-r001.d	Blank		AM 13 Benzo and Z by LCQQQ	Worklist 2024
P1-A1	Blank	Benzos_Z_Drugs_ACN_FA_ISP_2017.m	BZ-Blank2CS-r001.d	Blank		AM 13 Benzo and Z by LCQQQ	Worklist 2024
P1-A2	10 ng/mL	Benzos_Z_Drugs_ACN_FA_ISP_2017.m	BZ-10 ng/mLCS-r001.d	Calibration	1	AM 13 Benzo and Z by LCQQQ	Worklist 2024
P1-A3	25 ng/mL	Benzos_Z_Drugs_ACN_FA_ISP_2017.m	BZ-25 ng/mLCS-r001.d	Calibration	2	AM 13 Benzo and Z by LCQQQ	Worklist 2024
P1-A4	50 ng/mL	Benzos_Z_Drugs_ACN_FA_ISP_2017.m	BZ-50 ng/mLCS-r001.d	Calibration	3	AM 13 Benzo and Z by LCQQQ	Worklist 2024
P1-A5	100 ng/mL	Benzos_Z_Drugs_ACN_FA_ISP_2017.m	BZ-100 ng/mLCS-r001.d	Calibration	4	AM 13 Benzo and Z by LCQQQ	Worklist 2024
P1-A6	500 ng/mL	Benzos_Z_Drugs_ACN_FA_ISP_2017.m	BZ-500 ng/mLCS-r001.d	Calibration	5	AM 13 Benzo and Z by LCQQQ	Worklist 2024

Sample Position	Sample Name	Method	Data File	Sample Type	Level Name	Comment	Info.
P1-A7	1000 ng/mL	Benzos_Z_Drugs_ACN_FA_ISP_2017.m	BZ-1000 ng/mLCS_r001.d	Calibration	6	AM 13 Benzo and Z by LCQQQ	Worklist 2024
P1-A8	3000 ng/mL	Benzos_Z_Drugs_ACN_FA_ISP_2017.m	BZ-3000 ng/mLCS_r001.d	Calibration	7	AM 13 Benzo and Z by LCQQQ	Worklist 2024
P1-A1	Blank	Benzos_Z_Drugs_ACN_FA_ISP_2017.m	BZ-Carryover blank1CS_r001.d	Blank		AM 13 Benzo and Z by LCQQQ	Worklist 2024
P1-A9	Positive Glucuronide Control	Benzos_Z_Drugs_ACN_FA_ISP_2017.m	BZ-PCGluc-CS_r001.d	Sample		AM 13 Benzo and Z by LCQQQ	300 ng/mL Alltech lot 715-5035 in neg lot POC112116; Worklist 2024
P1-B1	Negative Glucuronide Control	Benzos_Z_Drugs_ACN_FA_ISP_2017.m	BZ-NC Gluc-CS-r001.d	Sample		AM 13 Benzo and Z by LCQQQ	300 ng/mL Alltech lot 715-5035 in neg lot POC112116; Worklist 2024
P1-B2	Positive Control	Benzos_Z_Drugs_ACN_FA_ISP_2017.m	BZ-PC-CS_r001.d	Sample		AM 13 Benzo and Z by LCQQQ	300 ng/mL Benzodiazepines Mix Cerilliant lot FE012413-02 in neg LOT POC041212; Worklist 2024
P1-B3	Negative Control	Benzos_Z_Drugs_ACN_FA_ISP_2017.m	BZ-NC-CS-r001.d	Sample		AM 13 Benzo and Z by LCQQQ	Negative Urine lot POC112116; Worklist 2024
P1-A1	Blank	Benzos_Z_Drugs_ACN_FA_ISP_2017.m	BZ-Carryover blank-CS_r001.d	Blank		AM 13 Benzo and Z by LCQQQ	Worklist 2024
P1-B4	M2017-4733-1	Benzos_Z_Drugs_ACN_FA_ISP_2017.m	BZ-M2017-4733-1.d	Sample		AM 13 Benzo and Z by LCQQQ	Worklist 2024
P1-B5	M2017-4840-3	Benzos_Z_Drugs_ACN_FA_ISP_2017.m	BZ-M2017-4840-3.d	Sample		AM 13 Benzo and Z by LCQQQ	Worklist 2024
P1-B6	M2017-4841-3	Benzos_Z_Drugs_ACN_FA_ISP_2017.m	BZ-M2017-4841-3.d	Sample		AM 13 Benzo and Z by LCQQQ	Worklist 2024
P1-B7	M2017-5089-4	Benzos_Z_Drugs_ACN_FA_ISP_2017.m	BZ-M2017-5089-4.d	Sample		AM 13 Benzo and Z by LCQQQ	Worklist 2024
P1-B8	P2017-2426-1	Benzos_Z_Drugs_ACN_FA_ISP_2017.m	BZ-P2017-2426-1.d	Sample		AM 13 Benzo and Z by LCQQQ	Worklist 2024
P1-B9	P2017-2426-2	Benzos_Z_Drugs_ACN_FA_ISP_2017.m	BZ-P2017-2426-2.d	Sample		AM 13 Benzo and Z by LCQQQ	Worklist 2024
P1-C1	P2017-2426-3	Benzos_Z_Drugs_ACN_FA_ISP_2017.m	BZ-P2017-2426-3.d	Sample		AM 13 Benzo and Z by LCQQQ	Worklist 2024
P1-C2	P2017-2464-1	Benzos_Z_Drugs_ACN_FA_ISP_2017.m	BZ-P2017-2464-1.d	Sample		AM 13 Benzo and Z by LCQQQ	Worklist 2024
P1-C3	P2017-2476-1	Benzos_Z_Drugs_ACN_FA_ISP_2017.m	BZ-P2017-2476-1.d	Sample		AM 13 Benzo and Z by LCQQQ	Worklist 2024
P1-C4	P2017-2486-2	Benzos_Z_Drugs_ACN_FA_ISP_2017.m	BZ-P2017-2486-2.d	Sample		AM 13 Benzo and Z by LCQQQ	Worklist 2024

Sample Position	Sample Name	Method	Data File	Sample Type	Level Name	Comment	Info.
P1-C5	P2017-2510-1	Benzos_Z_Drugs_ACN_FA_ISP_2017.m	BZ-P2017-2510-1.d	Sample		AM 13 Benzo and Z by LCQQQ	Worklist 2024
P1-C6	P2017-2577-1	Benzos_Z_Drugs_ACN_FA_ISP_2017.m	BZ-P2017-2577-1.d	Sample		AM 13 Benzo and Z by LCQQQ	Worklist 2024
P1-A1	Blank	Benzos_Z_Drugs_ACN_FA_ISP_2017.m	BZ-end of run blankCS.d	Blank		AM 13 Benzo and Z by LCQQQ	Worklist 2024
P1-D1	Blank	Benzos_Z_Drugs_ACN_FA_ISP_2017.m	BZ-BlankSP.d	Blank		AM 13 Benzo and Z by LCQQQ	Blood
P1-D1	Blank	Benzos_Z_Drugs_ACN_FA_ISP_2017.m	BZ-Blank1SP-r001.d	Blank		AM 13 Benzo and Z by LCQQQ	Blood
P1-D1	Blank	Benzos_Z_Drugs_ACN_FA_ISP_2017.m	BZ-Blank2SP-r001.d	Blank		AM 13 Benzo and Z by LCQQQ	Blood
P1-D2	10 ngmL	Benzos_Z_Drugs_ACN_FA_ISP_2017.m	BZ-10 ngmLSP-r001.d	Calibration	1	AM 13 Benzo and Z by LCQQQ	
P1-D3	25 ngmL	Benzos_Z_Drugs_ACN_FA_ISP_2017.m	BZ-25 ngmLSP_r001.d	Calibration	2	AM 13 Benzo and Z by LCQQQ	
P1-D4	50 ngmL	Benzos_Z_Drugs_ACN_FA_ISP_2017.m	BZ-50 ngmLSP_r001.d	Calibration	3	AM 13 Benzo and Z by LCQQQ	
P1-D5	100 ngmL	Benzos_Z_Drugs_ACN_FA_ISP_2017.m	BZ-100 ngmLSP_r001.d	Calibration	4	AM 13 Benzo and Z by LCQQQ	
P1-D6	500 ngmL	Benzos_Z_Drugs_ACN_FA_ISP_2017.m	BZ-500 ngmLSP_r001.d	Calibration	5	AM 13 Benzo and Z by LCQQQ	
P1-D7	1000 ngmL	Benzos_Z_Drugs_ACN_FA_ISP_2017.m	BZ-1000 ngmLSP_r001.d	Calibration	6	AM 13 Benzo and Z by LCQQQ	
P1-D1	Blank	Benzos_Z_Drugs_ACN_FA_ISP_2017.m	BZ-Carryover blank1SP_r001.d	Blank		AM 13 Benzo and Z by LCQQQ	
P1-D8	Negative Blood Control	Benzos_Z_Drugs_ACN_FA_ISP_2017.m	BZ-NC-B_r001.d	Sample		AM 13 Benzo and Z by LCQQQ	Hemostate Negative Sheep Blood LOT 361331-3
P1-D9	Positive Blood Control	Benzos_Z_Drugs_ACN_FA_ISP_2017.m	BZ-PC-B-r001.d	Sample		AM 13 Benzo and Z by LCQQQ	Benzodiazepines Mix Cerilliant lot FE04221402 in Hemostate Sheep Blood Lot 361331-3
P1-D1	Blank	Benzos_Z_Drugs_ACN_FA_ISP_2017.m	BZ-Carryover blank-SP_r001.d	Blank		AM 13 Benzo and Z by LCQQQ	
P1-E1	M2017-3728-1	Benzos_Z_Drugs_ACN_FA_ISP_2017.m	BZ-M2017-3728-1.d	Sample		AM 13 Benzo and Z by LCQQQ	Blood
P1-E2	P2017-1918-1	Benzos_Z_Drugs_ACN_FA_ISP_2017.m	BZ-P2017-1918-1.d	Sample		AM 13 Benzo and Z by LCQQQ	Blood
P1-D1	Blank	Benzos_Z_Drugs_ACN_FA_ISP_2017.m	BZ-end of run blank.d	Blank		AM 13 Benzo and Z by LCQQQ	
P2-A1	Blank	isp blood cannabinoids Poky 2016-3.m		Blank			

Sample Position	Sample Name	Method	Data File	Sample Type	Level Name	Comment	Info.
			MJ-Blank1-r001.d			AM 14 Cannabinoids by LCQQQ	
P2-A1	Blank	isp blood cannabinoids Poky 2016-3.m	MJ-Blank2-r001.d	Blank		AM 14 Cannabinoids by LCQQQ	
P2-A2	Blood: 1_5 ng/mL	isp blood cannabinoids Poky 2016-3.m	MJ-CAL1-r001.d	Calibration	1	AM 14 Cannabinoids by LCQQQ	c-THC @5ng/mL, all others @1 ng/mL
P2-A3	Blood: 2_10 ng/mL	isp blood cannabinoids Poky 2016-3.m	MJ-CAL2_r001.d	Calibration	2	AM 14 Cannabinoids by LCQQQ	c-THC @10ng/mL, all others @2 ng/mL
P2-A4	Blood: 5_25 ng/mL	isp blood cannabinoids Poky 2016-3.m	MJ-CAL3_r001.d	Calibration	3	AM 14 Cannabinoids by LCQQQ	c-THC @25ng/mL, all others @5 ng/mL
P2-A5	Blood: 10_50 ng/mL	isp blood cannabinoids Poky 2016-3.m	MJ-CAL4_r001.d	Calibration	4	AM 14 Cannabinoids by LCQQQ	c-THC @50ng/mL, all others @10 ng/mL
P2-A6	Blood: 25_125 ng/mL	isp blood cannabinoids Poky 2016-3.m	MJ-CAL5_r001.d	Calibration	5	AM 14 Cannabinoids by LCQQQ	c-THC @125ng/mL, all others @25 ng/mL
P2-A7	Blood: 50_250 ng/mL	isp blood cannabinoids Poky 2016-3.m	MJ-CAL6_r001.d	Calibration	6	AM 14 Cannabinoids by LCQQQ	c-THC @250ng/mL, all others @50 ng/mL
P2-A1	Blank	isp blood cannabinoids Poky 2016-3.m	MJ-Carryover blank1_r001.d	Blank		AM 14 Cannabinoids by LCQQQ	
P2-A9	Blood Negative Control	isp blood cannabinoids Poky 2016-3.m	MJ-NC-r001.d	Sample		AM 14 Cannabinoids by LCQQQ	Hemostate Negative Sheep Blood LOT 361331-3
P2-B1	PC1	isp blood cannabinoids Poky 2016-3.m	MJ-POS Ctrl 1-r001.d	Sample		AM 14 Cannabinoids by LCQQQ	Hemostate Sheep Blood LOT 361331-3 + WS050917
P2-A1	Blank	isp blood cannabinoids Poky 2016-3.m	MJ-Blank 3_r001.d	Blank		AM 14 Cannabinoids by LCQQQ	
P2-B2	M2017-3451-1	isp blood cannabinoids Poky 2016-3.m	M2017-3451-1.d	Sample		AM 14 Cannabinoids by LCQQQ	Blood
P2-B3	M2017-3488-1	isp blood cannabinoids Poky 2016-3.m	M2017-3488-1.d	Sample		AM 14 Cannabinoids by LCQQQ	Blood
P2-B4	M2017-3729-1	isp blood cannabinoids Poky 2016-3.m	M2017-3729-1.d	Sample		AM 14 Cannabinoids by LCQQQ	Blood
P2-B5	M2017-3903-1	isp blood cannabinoids Poky 2016-3.m	M2017-3903-1.d	Sample		AM 14 Cannabinoids by LCQQQ	Blood
P2-B6	P2017-1787-2	isp blood cannabinoids Poky 2016-3.m	P2017-1787-2.d	Sample		AM 14 Cannabinoids by LCQQQ	Blood
P2-B7	P2017-1829-4	isp blood cannabinoids Poky 2016-3.m	P2017-1829-4.d	Sample		AM 14 Cannabinoids by LCQQQ	Blood

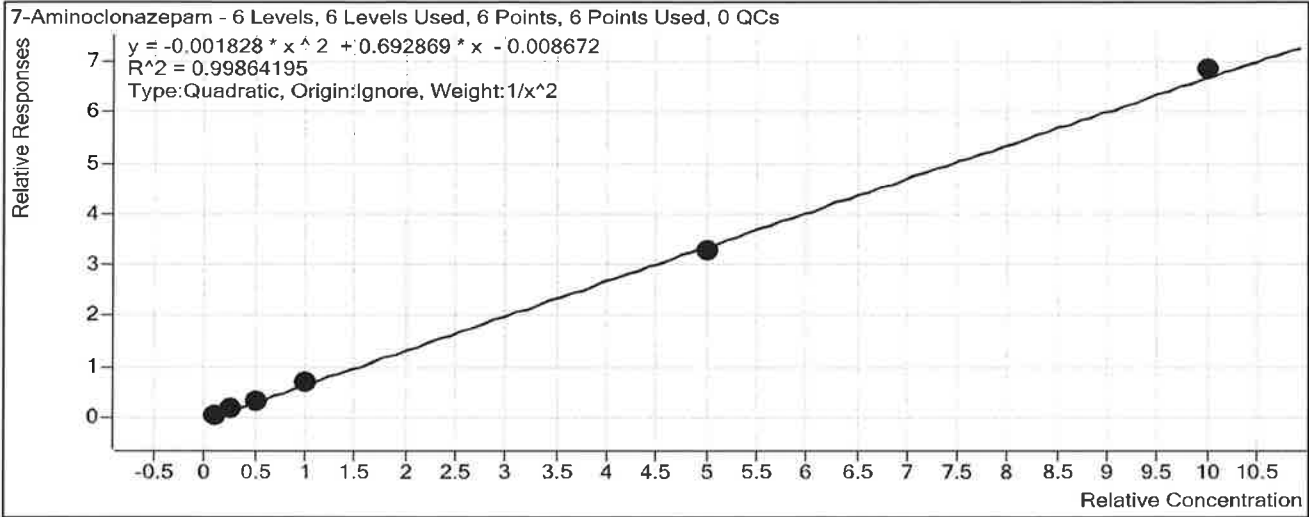
Sample Position	Sample Name	Method	Data File	Sample Type	Level Name	Comment	Info.
P2-B8	PC2	isp blood cannabinoids Poky 2016-3.m	MJ-POS Ctrl 2-r001.d	Sample		AM 14 Cannabinoids by LCQQQ	Hemostate Sheep Blood LOT 361331-3 + WS050917
P2-B9	P2017-1917-1	isp blood cannabinoids Poky 2016-3.m	P2017-1917-1.d	Sample		AM 14 Cannabinoids by LCQQQ	Blood
P2-C1	P2017-1918-1	isp blood cannabinoids Poky 2016-3.m	P2017-1918-1.d	Sample		AM 14 Cannabinoids by LCQQQ	Blood
P2-C2	P2017-1929-1	isp blood cannabinoids Poky 2016-3.m	P2017-1929-1.d	Sample		AM 14 Cannabinoids by LCQQQ	Blood
P2-C3	P2017-1950-1	isp blood cannabinoids Poky 2016-3.m	P2017-1950-1.d	Sample		AM 14 Cannabinoids by LCQQQ	Blood
P2-C4	P2017-1986-1	isp blood cannabinoids Poky 2016-3.m	P2017-1986-1.d	Sample		AM 14 Cannabinoids by LCQQQ	Blood
P2-C5	P2017-2023-1	isp blood cannabinoids Poky 2016-3.m	P2017-2023-1.d	Sample		AM 14 Cannabinoids by LCQQQ	Blood
P2-C6	P2017-2028-5	isp blood cannabinoids Poky 2016-3.m	P2017-2028-5.d	Sample		AM 14 Cannabinoids by LCQQQ	Blood
P2-A1	Blank	isp blood cannabinoids Poky 2016-3.m	MJ-Blank4-r001.d	Blank		AM 14 Cannabinoids by LCQQQ	

ISP FORENSICS Calibration Curve Report

SP

Batch Data Path C:\MassHunter\Data\2017\Combined\111617 SP CS Benz and Cann
Reinjects\QuantResults\111617 BENZ SP.batch.bin
Last Calib Update 11/17/2017 10:05 AM **Analyst Name** ISP TOX

Target Compound 7-Aminoclonazepam
Internal Standard 7-Aminoflunitrazepam-D7 ISTD



Sample	Level	Enabled	Exp Conc	Final Conc	Accuracy
10 ng/mL	1	<input checked="" type="checkbox"/>	10	10.1	100.6
25 ng/mL	2	<input checked="" type="checkbox"/>	25	24.5	97.9
50 ng/mL	3	<input checked="" type="checkbox"/>	50	49.6	99.1
100 ng/mL	4	<input checked="" type="checkbox"/>	100	104.8	104.8
500 ng/mL	5	<input checked="" type="checkbox"/>	500	479.5	95.9
1000 ng/mL	6	<input checked="" type="checkbox"/>	1000	1017.0	101.7

ISP FORENSICS Calibration Curve Report

AS

Batch Data Path

C:\MassHunter\Data\2017\Combined\111617 SP CS Benz and Cann
Reinjects\QuantResults\111617 BENZ SP.batch.bin

Last Calib Update

11/17/2017 10:05 AM

Analyst Name

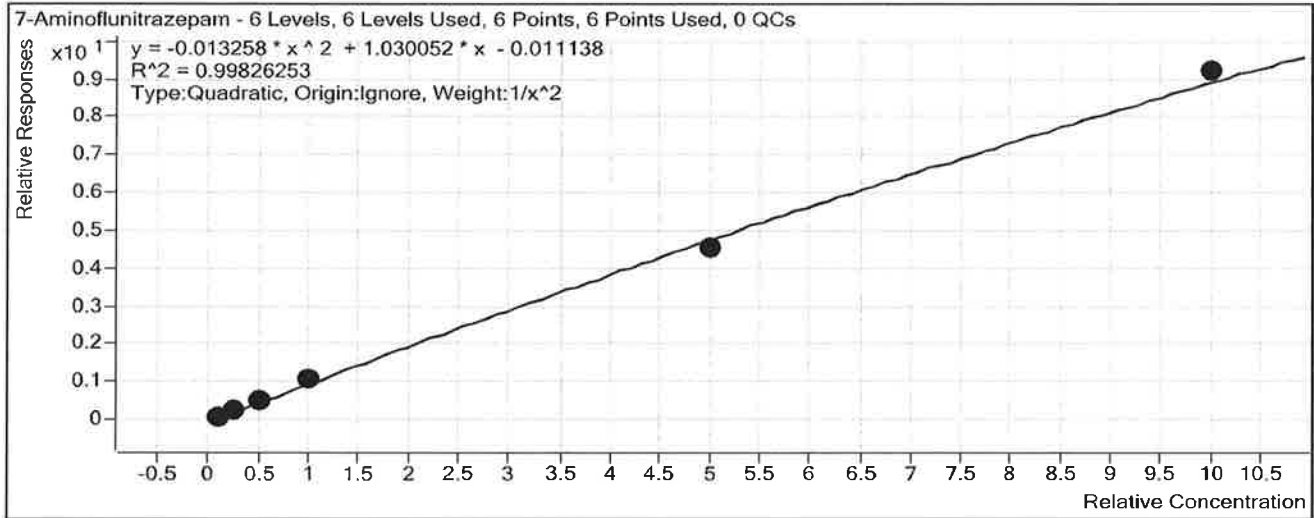
ISP TOX

Target Compound

7-Aminoflunitrazepam

Internal Standard

7-Aminoflunitrazepam-D7 ISTD



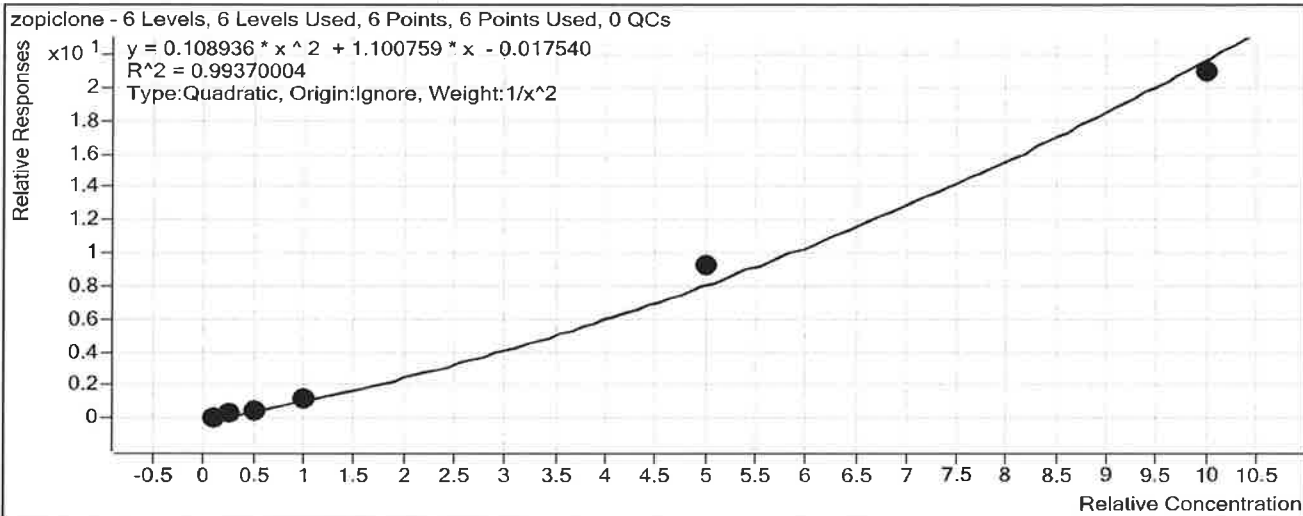
Sample	Level	Enabled	Exp Conc	Final Conc	Accuracy
10 ng/mL	1	<input checked="" type="checkbox"/>	10	10.0	100.3
25 ng/mL	2	<input checked="" type="checkbox"/>	25	24.6	98.3
50 ng/mL	3	<input checked="" type="checkbox"/>	50	50.1	100.3
100 ng/mL	4	<input checked="" type="checkbox"/>	100	104.3	104.3
500 ng/mL	5	<input checked="" type="checkbox"/>	500	469.4	93.9
1000 ng/mL	6	<input checked="" type="checkbox"/>	1000	1031.0	103.1

ISP Forensics Calibration Curve Report

D

Batch Data Path C:\MassHunter\Data\2017\Combined\111617 SP CS Benz and Cann
 Reinjects\QuantResults\111617 BENZ SP.batch.bin
Last Calib Update 11/17/2017 10:05 AM **Analyst Name** ISP TOX

Target Compound zopiclone
Internal Standard Nordiazepam-D5 ISTD



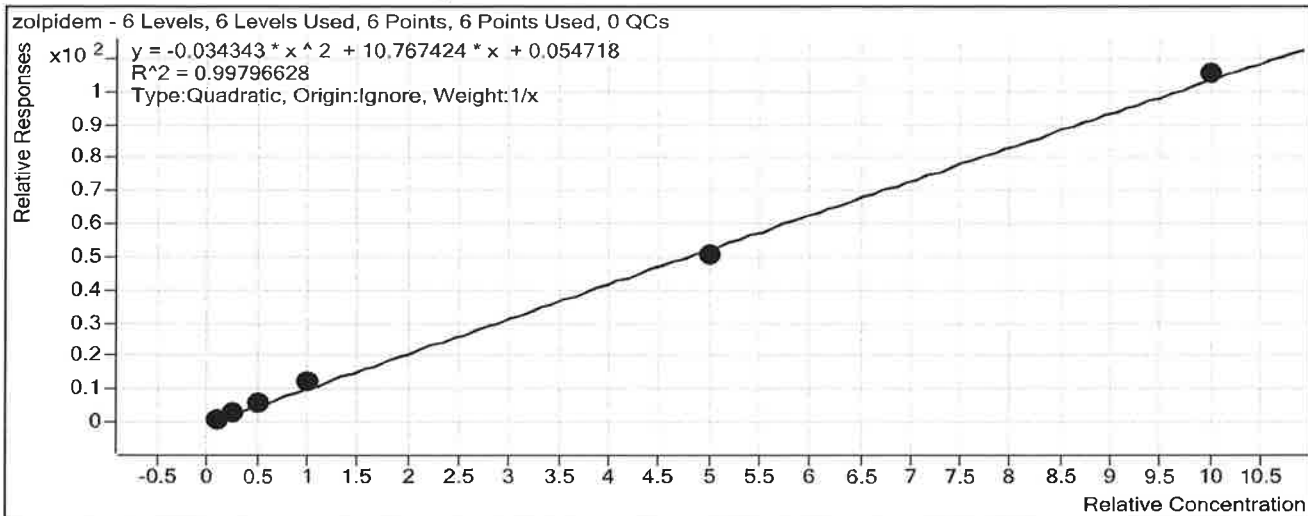
Sample	Level	Enabled	Exp Conc	Final Conc	Accuracy
10 ng/mL	1	<input checked="" type="checkbox"/>	10	10.3	102.5
25 ng/mL	2	<input checked="" type="checkbox"/>	25	24.3	97.3
50 ng/mL	3	<input checked="" type="checkbox"/>	50	46.5	93.1
100 ng/mL	4	<input checked="" type="checkbox"/>	100	98.2	98.2
500 ng/mL	5	<input checked="" type="checkbox"/>	500	546.0	109.2
1000 ng/mL	6	<input checked="" type="checkbox"/>	1000	970.5	97.0

ISP FORENSICS Calibration Curve Report

D

Batch Data Path C:\MassHunter\Data\2017\Combined\111617 SP CS Benz and Cann
 Reinjects\QuantResults\111617 BENZ SP.batch.bin
Last Calib Update 11/17/2017 10:05 AM **Analyst Name** ISP TOX

Target Compound zolpidem
Internal Standard Nordiazepam-D5 ISTD

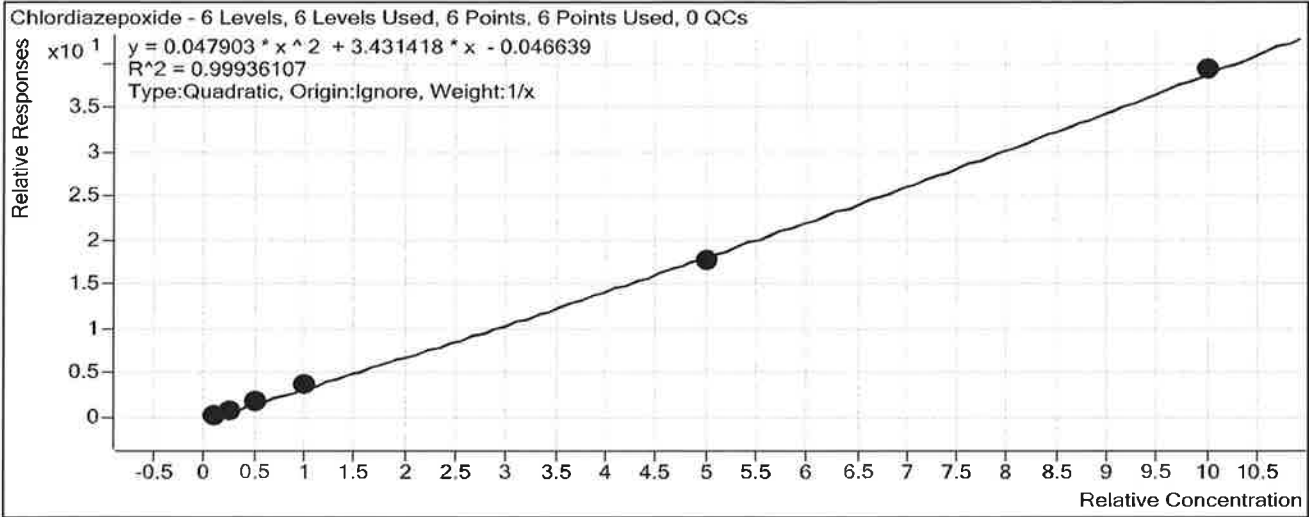


Sample	Level	Enabled	Exp Conc	Final Conc	Accuracy
10 ng/mL	1	<input checked="" type="checkbox"/>	10	8.9	88.9
25 ng/mL	2	<input checked="" type="checkbox"/>	25	24.5	98.2
50 ng/mL	3	<input checked="" type="checkbox"/>	50	52.1	104.3
100 ng/mL	4	<input checked="" type="checkbox"/>	100	112.3	112.3
500 ng/mL	5	<input checked="" type="checkbox"/>	500	476.4	95.3
1000 ng/mL	6	<input checked="" type="checkbox"/>	1000	1010.8	101.1

ISP FORENSICS Calibration Curve Report

Batch Data Path C:\MassHunter\Data\2017\Combined\111617 SP CS Benz and Cann
 Reinjects\QuantResults\111617 BENZ SP.batch.bin
Last Calib Update 11/17/2017 10:05 AM **Analyst Name** ISP TOX

Target Compound *Chlordiazepoxide*
Internal Standard *Nordiazepam-D5 ISTD*



Sample	Level	Enabled	Exp Conc	Final Conc	Accuracy
10 ng/mL	1	<input checked="" type="checkbox"/>	10	9.7	97.0
25 ng/mL	2	<input checked="" type="checkbox"/>	25	24.1	96.4
50 ng/mL	3	<input checked="" type="checkbox"/>	50	50.1	100.1
100 ng/mL	4	<input checked="" type="checkbox"/>	100	108.4	108.4
500 ng/mL	5	<input checked="" type="checkbox"/>	500	488.3	97.7
1000 ng/mL	6	<input checked="" type="checkbox"/>	1000	1004.5	100.5

ISP FORENSICS Calibration Curve Report

SP

Batch Data Path

C:\MassHunter\Data\2017\Combined\111617 SP CS Benz and Cann
Reinjects\QuantResults\111617 BENZ SP.batch.bin

Last Calib Update

11/17/2017 10:05 AM

Analyst Name

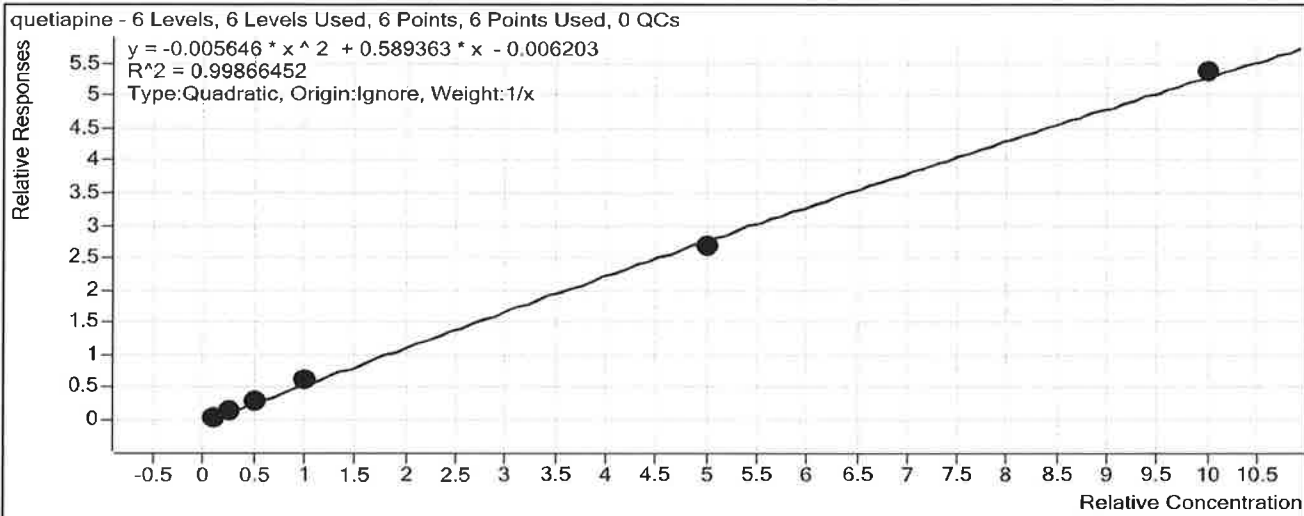
ISP TOX

Target Compound

quetiapine

Internal Standard

Temazepam-D5 ISTD



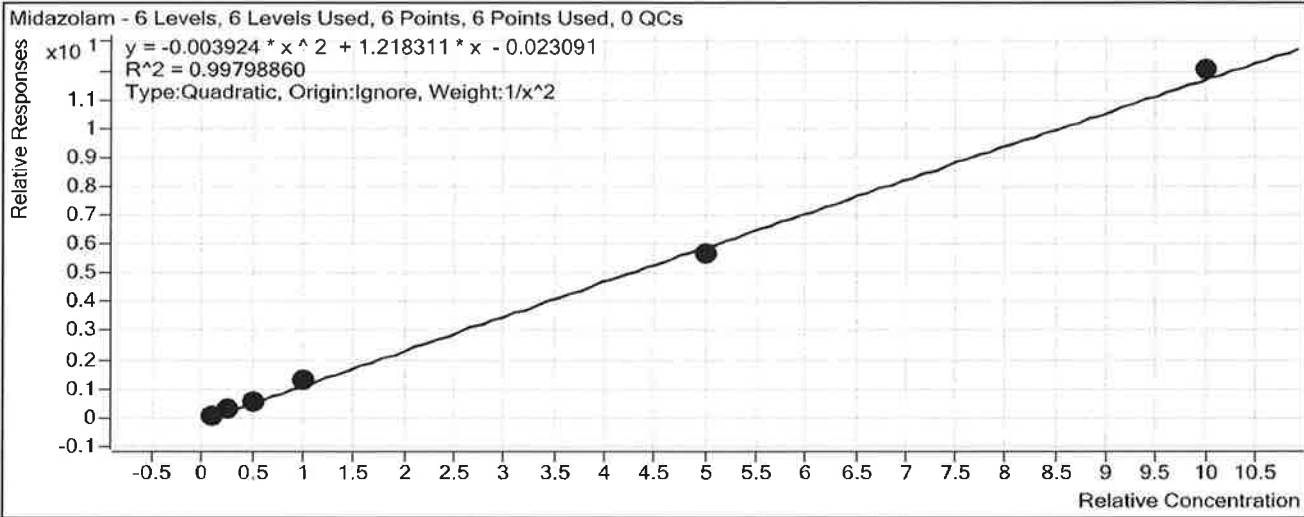
Sample	Level	Enabled	Exp Conc	Final Conc	Accuracy
10 ng/mL	1	<input checked="" type="checkbox"/>	10	9.4	93.6
25 ng/mL	2	<input checked="" type="checkbox"/>	25	24.5	98.0
50 ng/mL	3	<input checked="" type="checkbox"/>	50	50.4	100.9
100 ng/mL	4	<input checked="" type="checkbox"/>	100	110.3	110.3
500 ng/mL	5	<input checked="" type="checkbox"/>	500	481.5	96.3
1000 ng/mL	6	<input checked="" type="checkbox"/>	1000	1009.1	100.9

ISP FORENSICS Calibration Curve Report

D

Batch Data Path C:\MassHunter\Data\2017\Combined\111617 SP CS Benz and Cann
 Reinjects\QuantResults\111617 BENZ SP.batch.bin
Last Calib Update 11/17/2017 10:05 AM **Analyst Name** ISP TOX

Target Compound Midazolam
Internal Standard Clonazepam-D4 ISTD



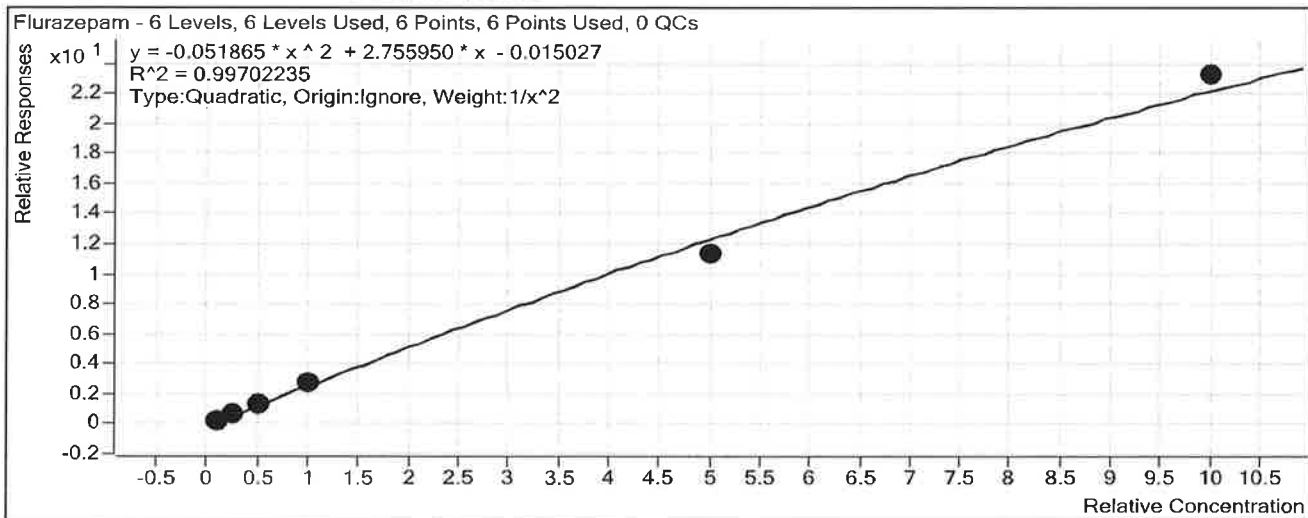
Sample	Level	Enabled	Exp Conc	Final Conc	Accuracy
10 ng/mL	1	<input checked="" type="checkbox"/>	10	10.0	100.4
25 ng/mL	2	<input checked="" type="checkbox"/>	25	24.7	98.8
50 ng/mL	3	<input checked="" type="checkbox"/>	50	48.9	97.7
100 ng/mL	4	<input checked="" type="checkbox"/>	100	105.9	105.9
500 ng/mL	5	<input checked="" type="checkbox"/>	500	474.9	95.0
1000 ng/mL	6	<input checked="" type="checkbox"/>	1000	1021.1	102.1

ISP FORENSICS Calibration Curve Report

SP

Batch Data Path C:\MassHunter\Data\2017\Combined\111617 SP CS Benz and Cann
 Reinjects\QuantResults\111617 BENZ SP.batch.bin
Last Calib Update 11/17/2017 10:05 AM **Analyst Name** ISP TOX

Target Compound *Flurazepam*
Internal Standard *Diazepam-D5 ISTD*



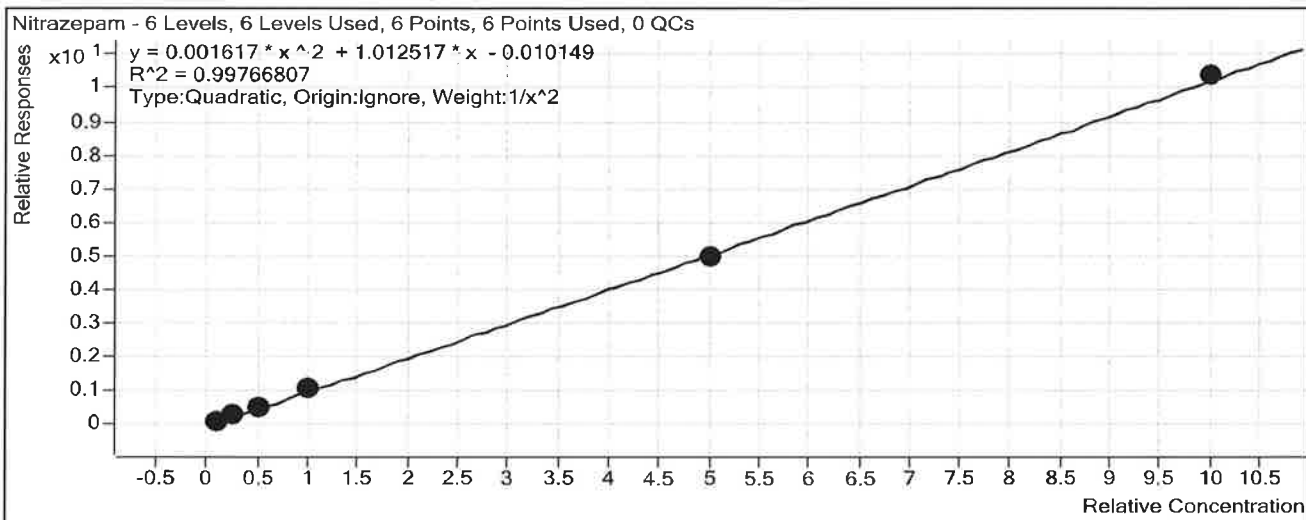
Sample	Level	Enabled	Exp Conc	Final Conc	Accuracy
10 ng/mL	1	<input checked="" type="checkbox"/>	10	10.0	99.9
25 ng/mL	2	<input checked="" type="checkbox"/>	25	24.7	98.8
50 ng/mL	3	<input checked="" type="checkbox"/>	50	50.6	101.2
100 ng/mL	4	<input checked="" type="checkbox"/>	100	104.5	104.5
500 ng/mL	5	<input checked="" type="checkbox"/>	500	454.2	90.8
1000 ng/mL	6	<input checked="" type="checkbox"/>	1000	1053.8	105.4

ISP FORENSICS Calibration Curve Report

D

Batch Data Path C:\MassHunter\Data\2017\Combined\111617 SP CS Benz and Cann
Reinjects\QuantResults\111617 BENZ SP.batch.bin
Last Calib Update 11/17/2017 10:05 AM **Analyst Name** ISP TOX

Target Compound Nitrazepam
Internal Standard Clonazepam-D4 ISTD



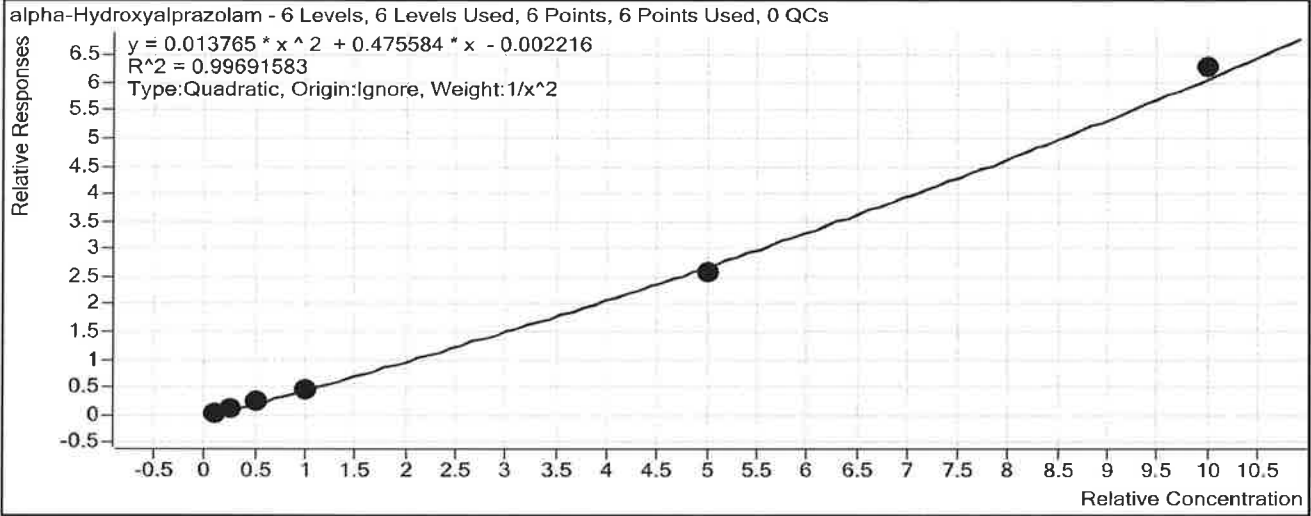
Sample	Level	Enabled	Exp Conc	Final Conc	Accuracy
10 ng/mL	1	<input checked="" type="checkbox"/>	10	10.0	100.0
25 ng/mL	2	<input checked="" type="checkbox"/>	25	25.4	101.6
50 ng/mL	3	<input checked="" type="checkbox"/>	50	46.9	93.8
100 ng/mL	4	<input checked="" type="checkbox"/>	100	106.0	106.0
500 ng/mL	5	<input checked="" type="checkbox"/>	500	488.4	97.7
1000 ng/mL	6	<input checked="" type="checkbox"/>	1000	1008.1	100.8

ISP Forensics Calibration Curve Report

SP

Batch Data Path C:\MassHunter\Data\2017\Combined\111617 SP CS Benz and Cann
Reinjects\QuantResults\111617 BENZ SP.batch.bin
Last Calib Update 11/17/2017 10:05 AM **Analyst Name** ISP TOX

Target Compound *alpha-Hydroxyalprazolam*
Internal Standard *alphahydroxyalprazolam-D5 ISTD*



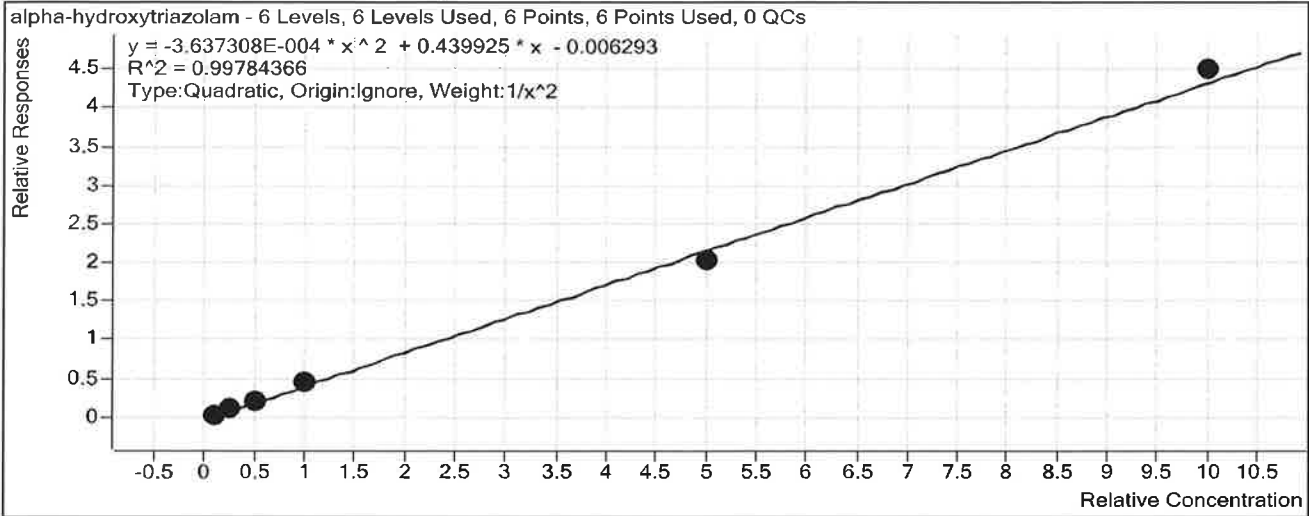
Sample	Level	Enabled	Exp Conc	Final Conc	Accuracy
10 ng/mL	1	<input checked="" type="checkbox"/>	10	10.0	99.5
25 ng/mL	2	<input checked="" type="checkbox"/>	25	24.4	97.7
50 ng/mL	3	<input checked="" type="checkbox"/>	50	54.2	108.4
100 ng/mL	4	<input checked="" type="checkbox"/>	100	97.6	97.6
500 ng/mL	5	<input checked="" type="checkbox"/>	500	474.3	94.9
1000 ng/mL	6	<input checked="" type="checkbox"/>	1000	1020.0	102.0

ISP Forensics Calibration Curve Report

D

Batch Data Path C:\MassHunter\Data\2017\Combined\111617 SP CS Benz and Cann
Reinjects\QuantResults\111617 BENZ SP.batch.bin
Last Calib Update 11/17/2017 10:05 AM **Analyst Name** ISP TOX

Target Compound *alpha-hydroxytriazolam*
Internal Standard *Nordiazepam-D5 ISTD*



Sample	Level	Enabled	Exp Conc	Final Conc	Accuracy
10 ng/mL	1	<input checked="" type="checkbox"/>	10	10.0	99.8
25 ng/mL	2	<input checked="" type="checkbox"/>	25	24.7	98.8
50 ng/mL	3	<input checked="" type="checkbox"/>	50	51.6	103.2
100 ng/mL	4	<input checked="" type="checkbox"/>	100	102.2	102.2
500 ng/mL	5	<input checked="" type="checkbox"/>	500	464.6	92.9
1000 ng/mL	6	<input checked="" type="checkbox"/>	1000	1032.2	103.2

ISP FORENSICS Calibration Curve Report

SP

Batch Data Path

C:\MassHunter\Data\2017\Combined\111617 SP CS Benz and Cann
Reinjects\QuantResults\111617 BENZ SP.batch.bin

Last Calib Update

11/17/2017 10:05 AM

Analyst Name

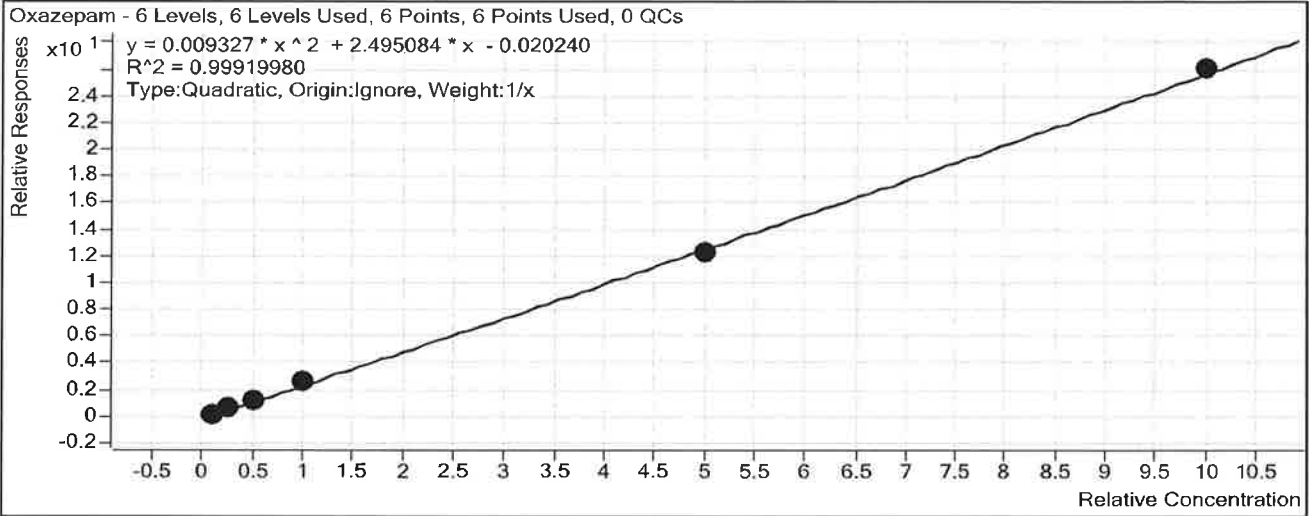
ISP TOX

Target Compound

Oxazepam

Internal Standard

Nordiazepam-D5 ISTD



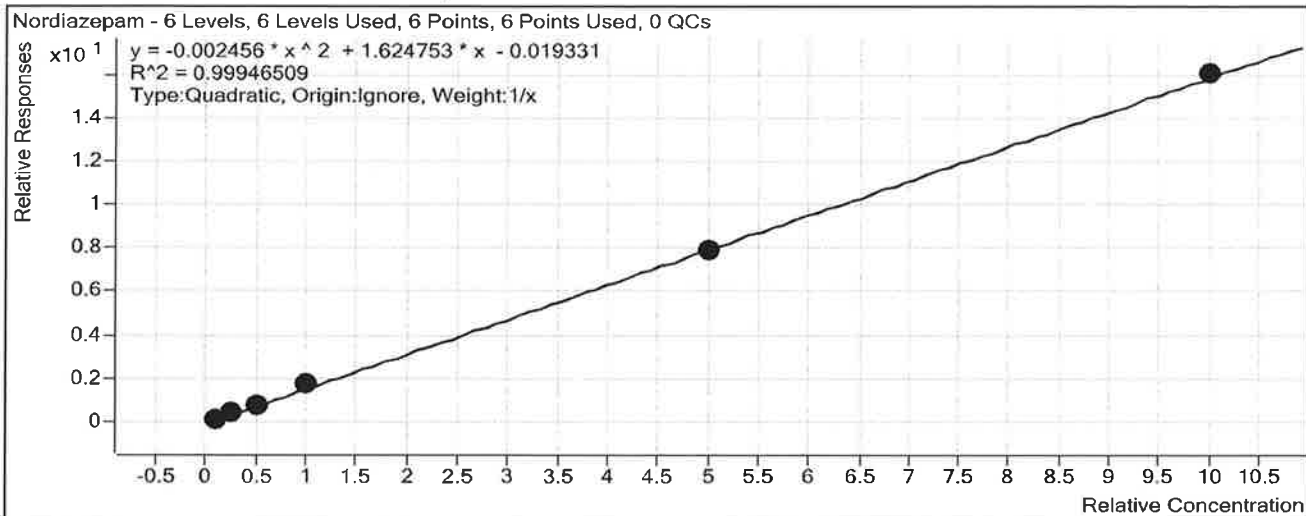
Sample	Level	Enabled	Exp Conc	Final Conc	Accuracy
10 ng/mL	1	<input checked="" type="checkbox"/>	10	9.4	94.1
25 ng/mL	2	<input checked="" type="checkbox"/>	25	24.5	98.1
50 ng/mL	3	<input checked="" type="checkbox"/>	50	50.8	101.5
100 ng/mL	4	<input checked="" type="checkbox"/>	100	108.4	108.4
500 ng/mL	5	<input checked="" type="checkbox"/>	500	485.8	97.2
1000 ng/mL	6	<input checked="" type="checkbox"/>	1000	1006.0	100.6

ISP FORENSICS Calibration Curve Report

D

Batch Data Path C:\MassHunter\Data\2017\Combined\111617 SP CS Benz and Cann
 Reinjects\QuantResults\111617 BENZ SP.batch.bin
Last Calib Update 11/17/2017 10:05 AM **Analyst Name** ISP TOX

Target Compound Nordiazepam
Internal Standard Nordiazepam-D5 ISTD



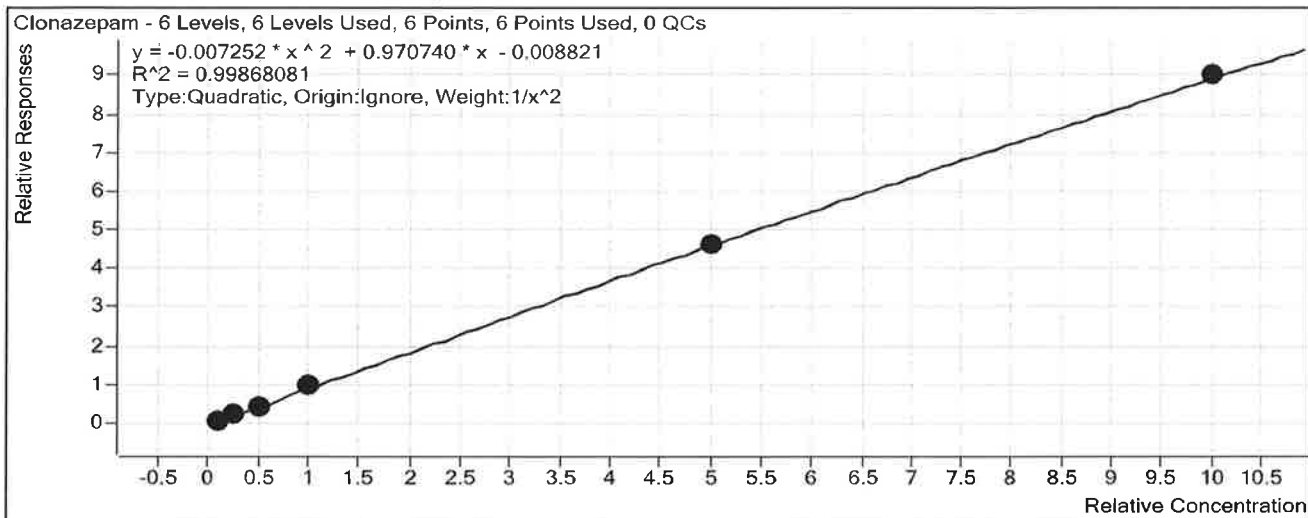
Sample	Level	Enabled	Exp Conc	Final Conc	Accuracy
10 ng/mL	1	<input checked="" type="checkbox"/>	10	9.6	96.3
25 ng/mL	2	<input checked="" type="checkbox"/>	25	25.1	100.4
50 ng/mL	3	<input checked="" type="checkbox"/>	50	48.9	97.7
100 ng/mL	4	<input checked="" type="checkbox"/>	100	107.1	107.1
500 ng/mL	5	<input checked="" type="checkbox"/>	500	489.7	97.9
1000 ng/mL	6	<input checked="" type="checkbox"/>	1000	1004.5	100.5

ISP FORENSICS Calibration Curve Report

SP

Batch Data Path C:\MassHunter\Data\2017\Combined\111617 SP CS Benz and Cann
Reinjects\QuantResults\111617 BENZ SP.batch.bin
Last Calib Update 11/17/2017 10:05 AM **Analyst Name** ISP TOX

Target Compound Clonazepam
Internal Standard Clonazepam-D4 ISTD



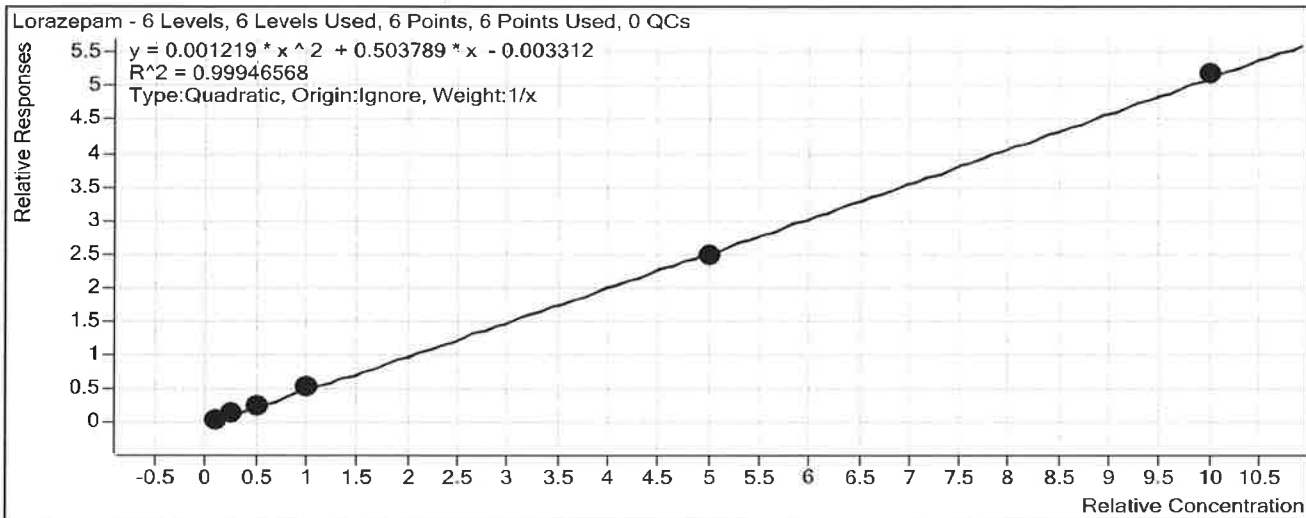
Sample	Level	Enabled	Exp Conc	Final Conc	Accuracy
10 ng/mL	1	<input checked="" type="checkbox"/>	10	10.0	100.4
25 ng/mL	2	<input checked="" type="checkbox"/>	25	25.0	100.0
50 ng/mL	3	<input checked="" type="checkbox"/>	50	47.8	95.6
100 ng/mL	4	<input checked="" type="checkbox"/>	100	104.9	104.9
500 ng/mL	5	<input checked="" type="checkbox"/>	500	493.9	98.8
1000 ng/mL	6	<input checked="" type="checkbox"/>	1000	1003.6	100.4

ISP FORENSICS Calibration Curve Report

17

Batch Data Path C:\MassHunter\Data\2017\Combined\111617 SP CS Benz and Cann
Reinjects\QuantResults\111617 BENZ SP.batch.bin
Last Calib Update 11/17/2017 10:05 AM **Analyst Name** ISP TOX

Target Compound Lorazepam
Internal Standard Nordiazepam-D5 ISTD



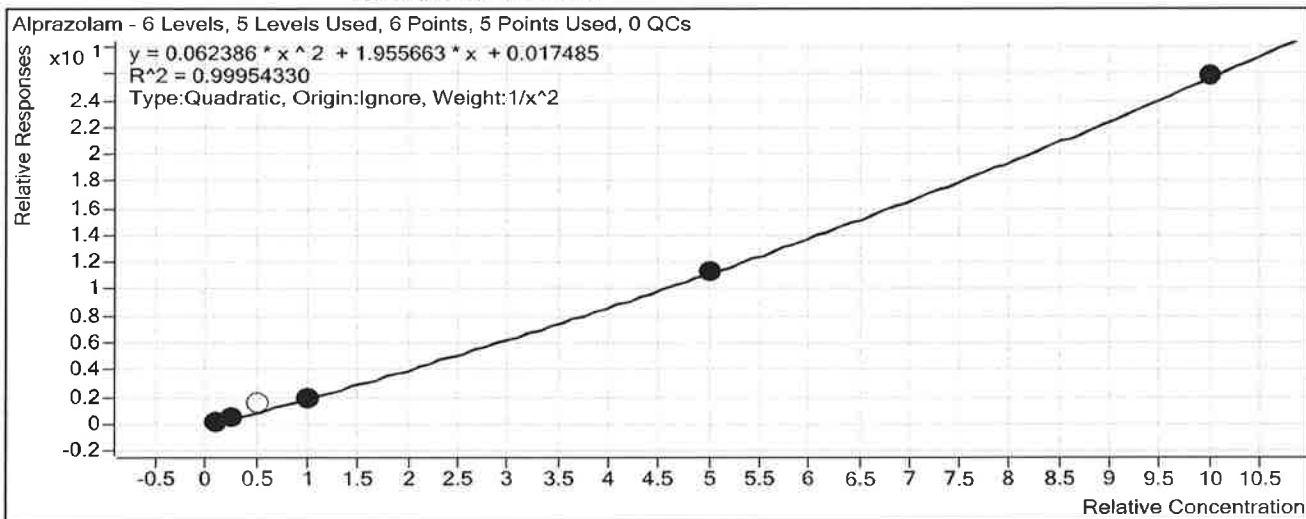
Sample	Level	Enabled	Exp Conc	Final Conc	Accuracy
10 ng/mL	1	<input checked="" type="checkbox"/>	10	9.4	94.1
25 ng/mL	2	<input checked="" type="checkbox"/>	25	26.0	103.9
50 ng/mL	3	<input checked="" type="checkbox"/>	50	48.3	96.7
100 ng/mL	4	<input checked="" type="checkbox"/>	100	106.9	106.9
500 ng/mL	5	<input checked="" type="checkbox"/>	500	490.3	98.1
1000 ng/mL	6	<input checked="" type="checkbox"/>	1000	1004.2	100.4

ISP FORENSICS

Calibration Curve Report

Batch Data Path C:\MassHunter\Data\2017\Combined\111617 SP CS Benz and Cann
 Reinjects\QuantResults\111617 BENZ SP.batch.bin
Last Calib Update 11/17/2017 10:05 AM **Analyst Name** ISP TOX

Target Compound Alprazolam
Internal Standard alphahydroxyalprazolam-D5 ISTD



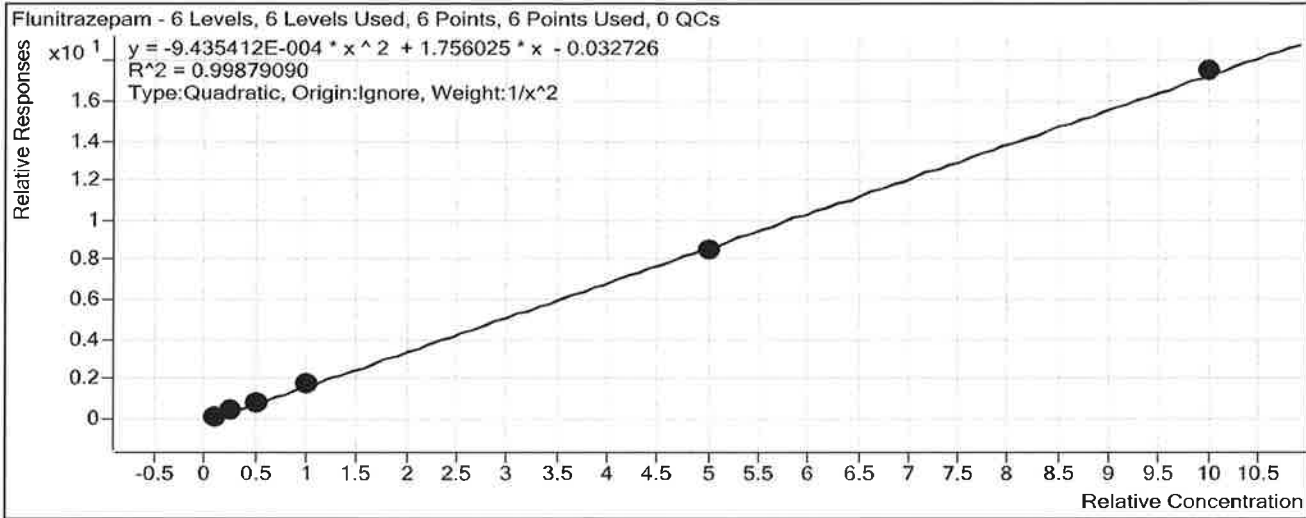
Sample	Level	Enabled	Exp Conc	Final Conc	Accuracy
10 ng/mL	1	<input checked="" type="checkbox"/>	10	9.9	98.9
25 ng/mL	2	<input checked="" type="checkbox"/>	25	25.8	103.3
50 ng/mL	3	<input type="checkbox"/>	50	76.3	152.7
100 ng/mL	4	<input checked="" type="checkbox"/>	100	97.6	97.6
500 ng/mL	5	<input checked="" type="checkbox"/>	500	501.0	100.2
1000 ng/mL	6	<input checked="" type="checkbox"/>	1000	1000.3	100.0

ISP FORENSICS Calibration Curve Report

D

Batch Data Path C:\MassHunter\Data\2017\Combined\111617 SP CS Benz and Cann
Reinjects\QuantResults\111617 BENZ SP.batch.bin
Last Calib Update 11/17/2017 10:05 AM **Analyst Name** ISP TOX

Target Compound Flunitrazepam
Internal Standard Clonazepam-D4 ISTD



Sample	Level	Enabled	Exp Conc	Final Conc	Accuracy
10 ng/mL	1	<input checked="" type="checkbox"/>	10	10.1	100.8
25 ng/mL	2	<input checked="" type="checkbox"/>	25	24.6	98.2
50 ng/mL	3	<input checked="" type="checkbox"/>	50	48.5	97.0
100 ng/mL	4	<input checked="" type="checkbox"/>	100	105.1	105.1
500 ng/mL	5	<input checked="" type="checkbox"/>	500	491.4	98.3
1000 ng/mL	6	<input checked="" type="checkbox"/>	1000	1005.4	100.5

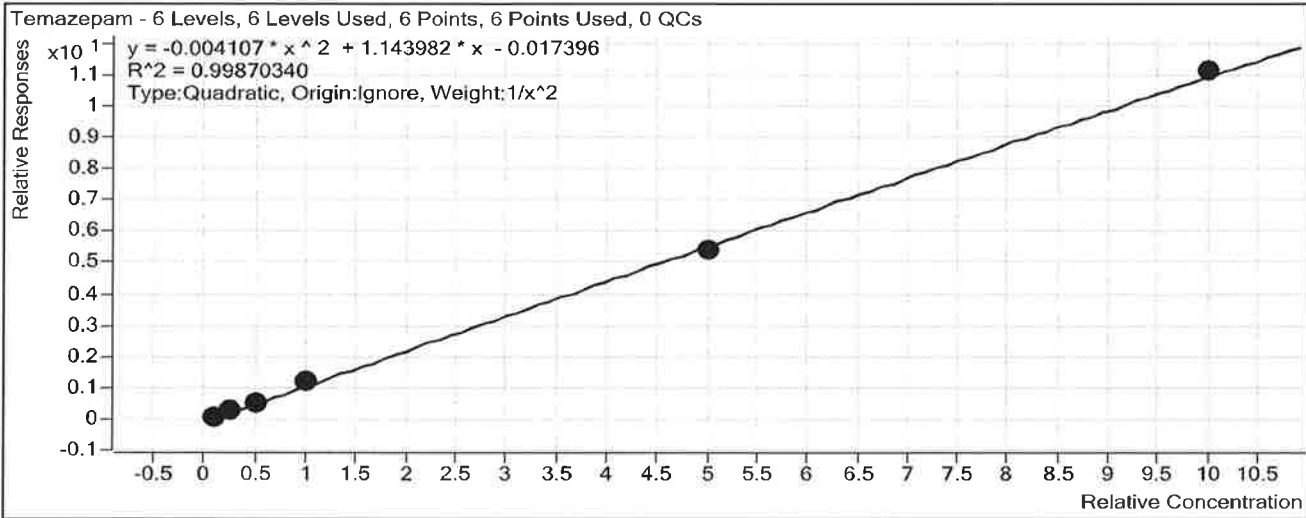
ISP FORENSICS

Calibration Curve Report

A

Batch Data Path C:\MassHunter\Data\2017\Combined\111617 SP CS Benz and Cann
 Reinjects\QuantResults\111617 BENZ SP.batch.bin
Last Calib Update 11/17/2017 10:05 AM **Analyst Name** ISP TOX

Target Compound *Temazepam*
Internal Standard *Temazepam-D5 ISTD*



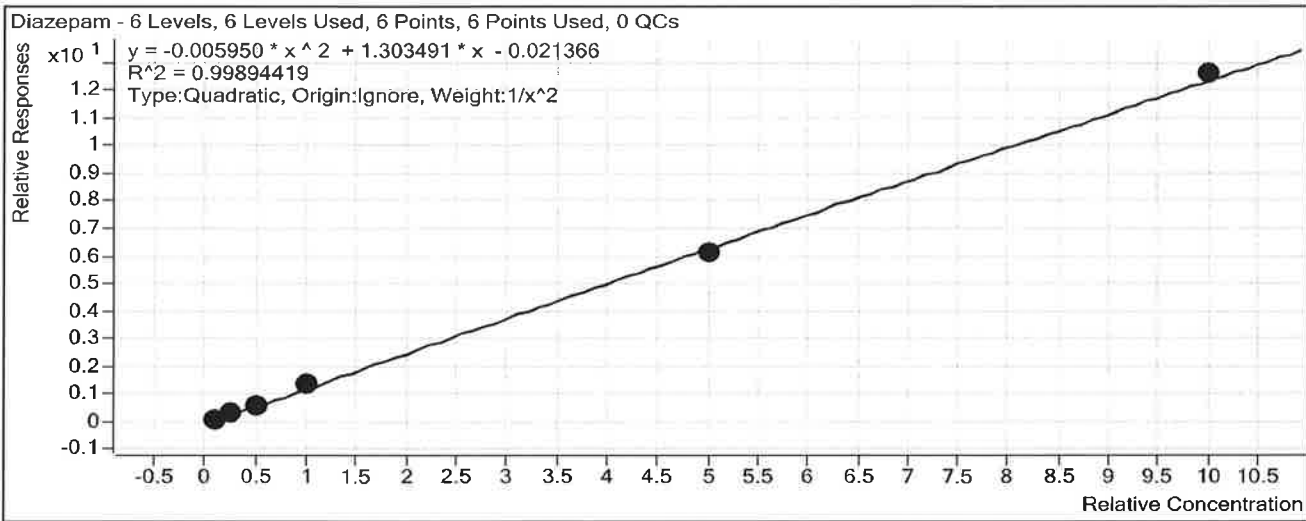
Sample	Level	Enabled	Exp Conc	Final Conc	Accuracy
10 ng/mL	1	<input checked="" type="checkbox"/>	10	10.1	101.0
25 ng/mL	2	<input checked="" type="checkbox"/>	25	24.3	97.1
50 ng/mL	3	<input checked="" type="checkbox"/>	50	49.3	98.5
100 ng/mL	4	<input checked="" type="checkbox"/>	100	105.1	105.1
500 ng/mL	5	<input checked="" type="checkbox"/>	500	486.8	97.4
1000 ng/mL	6	<input checked="" type="checkbox"/>	1000	1009.8	101.0

ISP FORENSICS Calibration Curve Report

SP

Batch Data Path C:\MassHunter\Data\2017\Combined\111617 SP CS Benz and Cann
 Reinjects\QuantResults\111617 BENZ SP.batch.bin
Last Calib Update 11/17/2017 10:05 AM **Analyst Name** ISP TOX

Target Compound *Diazepam*
Internal Standard *Diazepam-D5 ISTD*



Sample	Level	Enabled	Exp Conc	Final Conc	Accuracy
10 ng/mL	1	<input checked="" type="checkbox"/>	10	10.0	100.3
25 ng/mL	2	<input checked="" type="checkbox"/>	25	24.8	99.2
50 ng/mL	3	<input checked="" type="checkbox"/>	50	49.1	98.1
100 ng/mL	4	<input checked="" type="checkbox"/>	100	104.4	104.4
500 ng/mL	5	<input checked="" type="checkbox"/>	500	482.8	96.6
1000 ng/mL	6	<input checked="" type="checkbox"/>	1000	1014.6	101.5

D

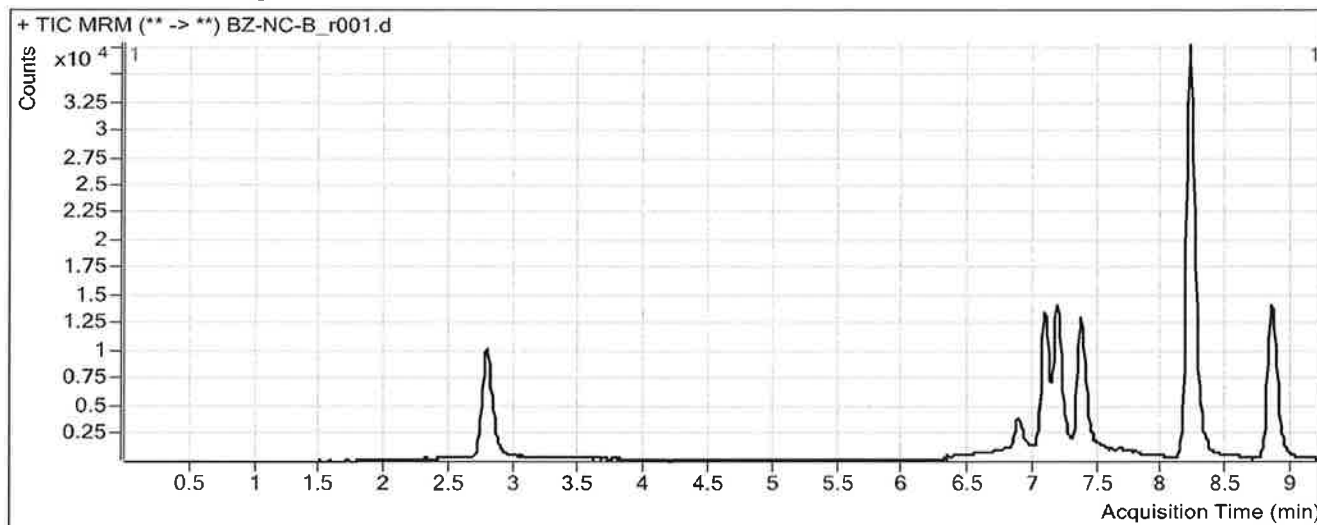
ISP FORENSICS
Pocatello
Benzodiazepine Analysis Report

Batch Data Path C:\MassHunter\Data\2017\Combined\111617 SP CS Benz and Cann Reinjects\QuantResults\11161
Analysis Time 11/17/2017 10:05 AM **Analyst Name** ISPUser
Report Time 11/17/2017 10:08 AM **Reporter Name** ISPUser
Last Calib Update 11/17/2017 10:05 AM **Batch State** Processed

Analysis Info

Acq Time 2017-11-17 01:22 **Data File** BZ-NC-B_r001.d
Sample Type Sample **Sample Name** Negative Blood Control
Dilution 1 **Acq Method** Benzos_Z_Drugs_ACN_FA_ISP_2017.m
Position P1-D8 **Sample Info** Hemostate Negative Sheep Blood LOT 361331-3
Inj Vol -1 **Comment** AM 13 Benzo and Z by LCQQQ

Sample Chromatogram



ISP FOKENSICS
Pocatello
Benzodiazepine Analysis Report

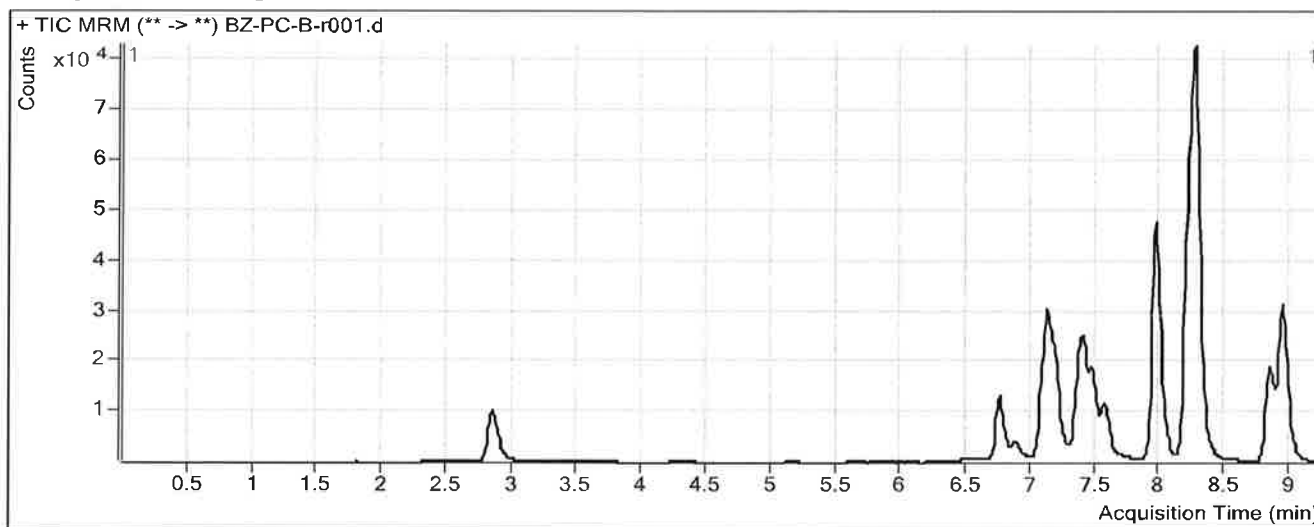
D

Batch Data Path C:\MassHunter\Data\2017\Combined\111617 SP CS Benz and Cann Reinjects\QuantResults\111617 BENZ SP.t
Analysis Time 11/17/2017 10:05 AM **Analyst Name** ISPUser
Report Time 11/17/2017 10:08 AM **Reporter Name** ISPUser
Last Calib Update 11/17/2017 10:05 AM **Batch State** Processed

Analysis Info

Acq Time 2017-11-17 01:38 **Data File** BZ-PC-B-r001.d
Sample Type Sample **Sample Name** Positive Blood Control
Dilution 1 **Acq Method** Benzos_Z_Drugs_ACN_FA_ISP_2017.m
Position P1-D9 **Sample Info** Benzodiazepines Mix Cerilliant lot FE04221402 in Hemostate Sheep Blood
Inj Vol -1 **Comment** AM 13 Benzo and Z by LCQQQ

Sample Chromatogram



Results

Compound	ISTD Compound	RT	Response	ISTD Resp	Resp Ratio	Final Conc
Nitrazepam	Clonazepam-D4 ISTD	6.738	34666	42842	0.8092	80.8128
Oxazepam	Nordiazepam-D5 ISTD	7.117	63368	30546	2.0745	83.6941
Clonazepam	Clonazepam-D4 ISTD	7.392	55282	42842	1.2904	135.2013
Lorazepam	Nordiazepam-D5 ISTD	7.458	14715	30546	0.4817	96.0531
Alprazolam	alphahydroxyalprazolam-D5 ISTD	7.562	30664	8949	3.4266	165.5763
Flunitrazepam	Clonazepam-D4 ISTD	7.944	159319	42842	3.7188	213.8811
Temazepam	Temazepam-D5 ISTD	8.249	261902	169935	1.5412	136.9154
Diazepam	Diazepam-D5 ISTD	8.925	107740	55879	1.9281	150.5926